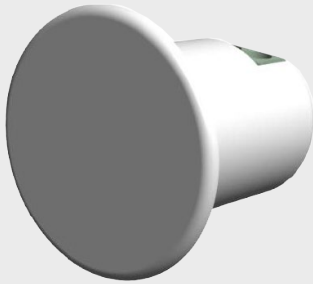


ORC-HC2-EXTERNAL-SENSOR-2

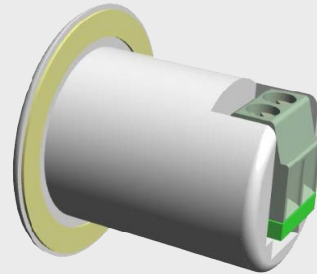
ITEM NO: 12590

The ORC-HC2-EXTERNAL-SENSOR-2 is compatible with the ORC-HC2, ORC-HC3, and ORC-HA product ranges. It can be purchased with a built-in standard 10K NTC thermostat sensor.

FRONT VIEW



REAR VIEW



SPECIFICATION

| | | | |
|------------------------------|---------------------|-------------------------|--------------------|
| Colour | White | Material | Plastic |
| Installation | Flush or Semi Flush | Compatible Range | ORC-HA and ORC-HC2 |
| Dimensions Front disc | 24mm (diameter) | Dimensions Deep | 24mm |

TECHNICAL INFORMATION

| | | | |
|---------------------------|------------------------------------|-------------------------|-------------------------------------|
| Temperature Sensor | 10K NTC | Range | 5 to 35° C |
| Material - Case | Plastic | Colour variables | Upon Request |
| Cable | Not included | Installation | Flush Semi Flush (2mm incl tape) |
| Cable installation | Visit website for lengths and type | | |

NOTES

This item will be 10K NTC as standard - Contact Orcomm if different sensor required.